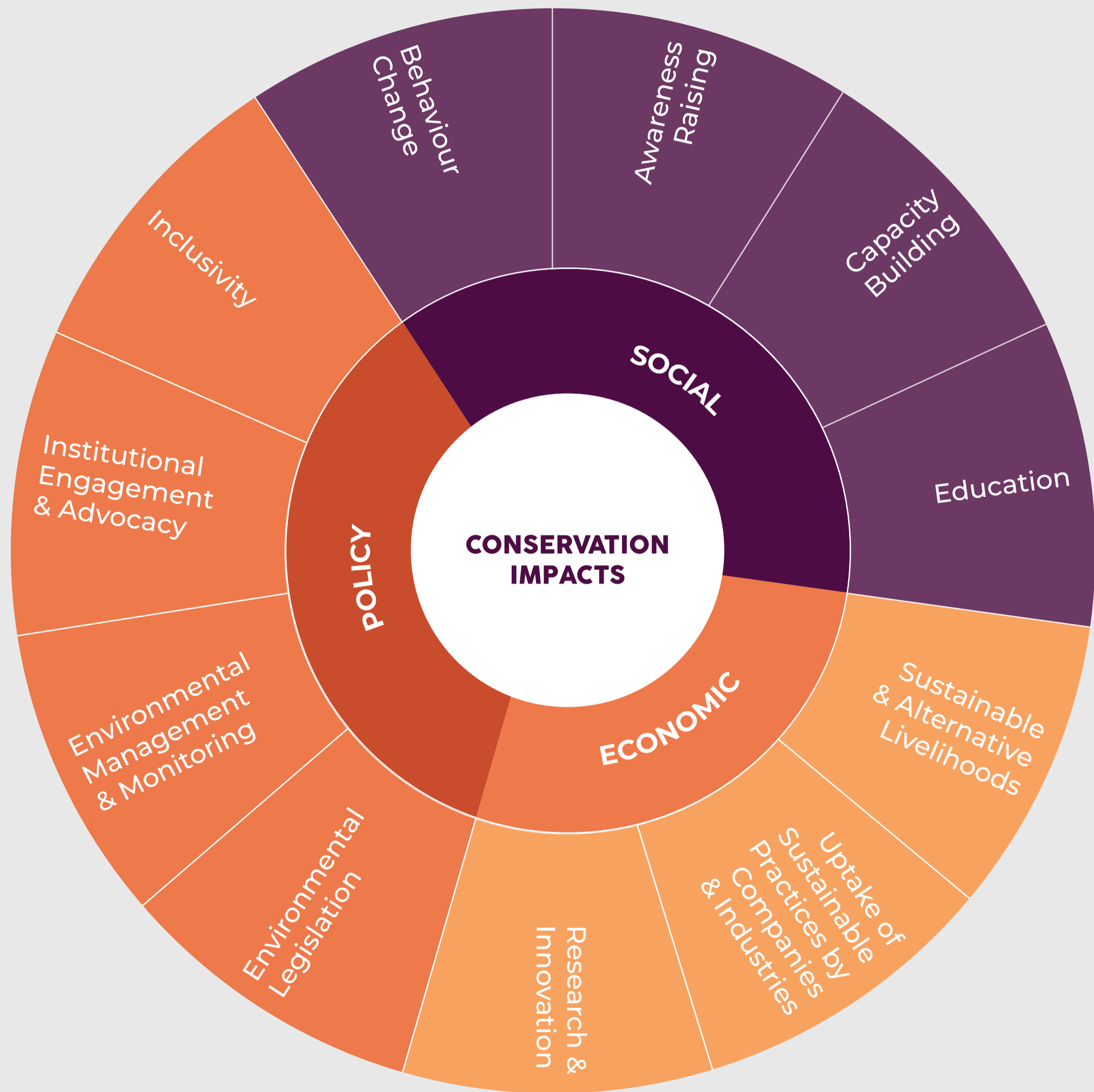


# Social, Economic, Policy Outcomes



## Indicators

- Behaviour Change**
  - Number of people changing their habits towards sustainable practices
  - Number of people enjoying/visiting nature
  - Number of new communities actively engaged
- Awareness Raising**
  - Number of campaigns (via social media, flyers, TV, radio, etc.)
  - Number of people reached through campaigns (via social media, flyers, TV, radio, etc.)
  - Number of awareness raising events organised
  - Number of people attending an awareness raising event
  - Number of people with improved knowledge
- Capacity Building**
  - Number of training workshops organised
  - Number of people trained
  - Number of new certifications/qualifications obtained
  - Number of new team members hired
- Education**
  - Number of children/students reached through educational campaigns
  - Number of schools/universities reached
  - Number of schools now including or adding new environmental topics/activities in their curriculum
- Sustainable & Alternative Livelihoods**
  - Number of green jobs created
  - Number of income-generating opportunities from sustainable practices
  - Number of farmers transitioning to sustainable/regenerative practices
- Uptake of Sustainable Practices by Companies and Industries**
  - Number of alternatives provided to unsustainable practices
  - % increase in revenue derived from responsible tourism
  - Number of local businesses transitioning to sustainable practices (e.g., tourism, plastic free, local produce)
  - Number of economically viable sustainable farms
  - % increase in revenue for sustainable farms derived from regenerative agriculture
- Research & Innovation**
  - Number of new technologies developed or piloted in local context
  - Number of peer-reviewed publications
  - Number of other research outputs (e.g., policy briefs, oral presentation)
- Environmental Legislation**
  - Number of laws approved/adhered to protect nature and mitigate against climate change
  - Number of public consultations on environmental issues by public authorities
  - Number of legal bans against harmful practices (e.g., use of ADD's, use of pesticides)
  - % increase in government environmental expenditure
- Environmental Management & Monitoring**
  - Number of management plans, strategies developed at local, regional or national levels
  - Number of policies and practices updated or informed with more recent or local knowledge
  - Number of traditional ecological knowledge and practices shared, acknowledged and integrated in environmental management
- Institutional Engagement & Advocacy**
  - Number of public authorities/entities involved
  - Number of activities (meetings, workshops etc.) involving local communities and public authorities
- Inclusivity**
  - Number of underrepresented groups included
  - Number of income-generating opportunities for people from underrepresented groups